

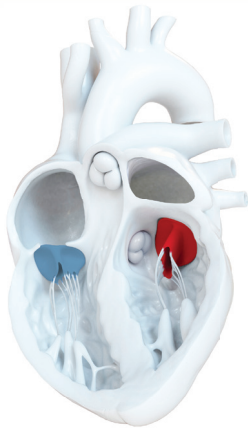
Edwards PASCAL Transcatheter Valve Repair System

In your hands  
we can create  
amazing.



Edwards

# The PASCAL repair system is just the beginning of our dedication to treating a large and complex patient population with mitral and tricuspid regurgitation



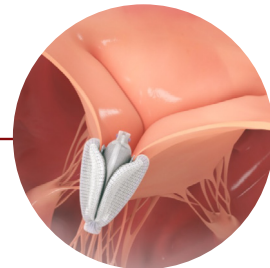
2019



## **PASCAL implant system for mitral regurgitation**

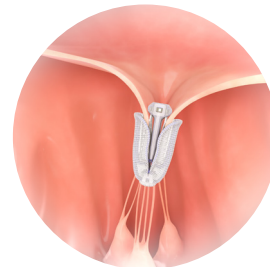
Uniquely designed for optimised leaflet capture and enhanced coaptation to achieve effective mitral regurgitation reduction.

2020



## **PASCAL implant system for mitral and tricuspid regurgitation**

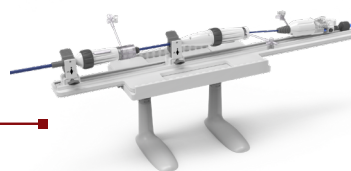
Effectively bridge the mitral and tricuspid gap with independent, atraumatic leaflet grasping, central spacer, and unique implant elongation.



## **PASCAL Ace implant system**

Expand leaflet repair treatment possibilities and the potential to achieve optimal MR/TR outcomes with the PASCAL Ace Implant System.

2021

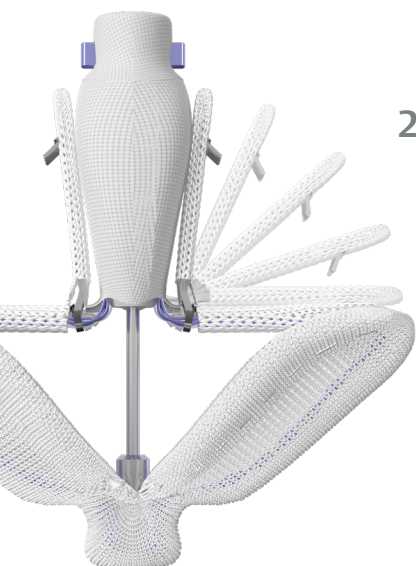


## **PASCAL Stabilizer Rail System**

Provides enhanced stability which enables controlled, single-handed catheter advancement, retraction, and torquing

## **Future Innovations**

Looking to the future, Edwards is developing a portfolio of differentiated innovations that will continue to transform care for this underserved patient population. And we're just getting started.

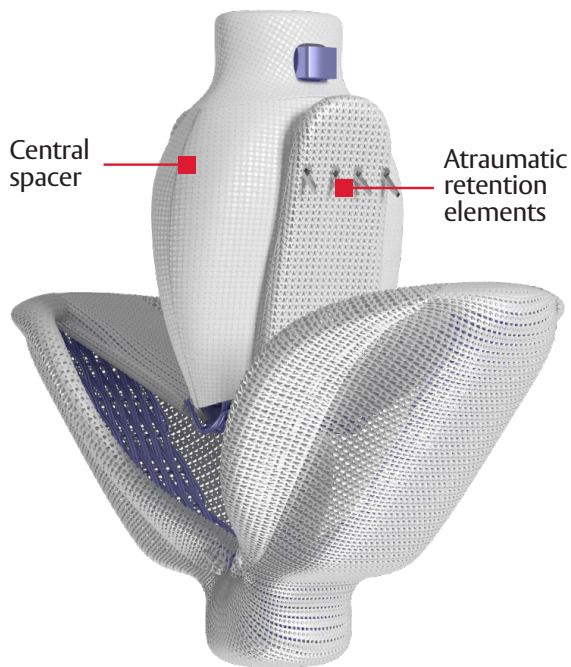


# PASCAL repair system designed for predictable capture, positioning, and release in patients with mitral and tricuspid regurgitation

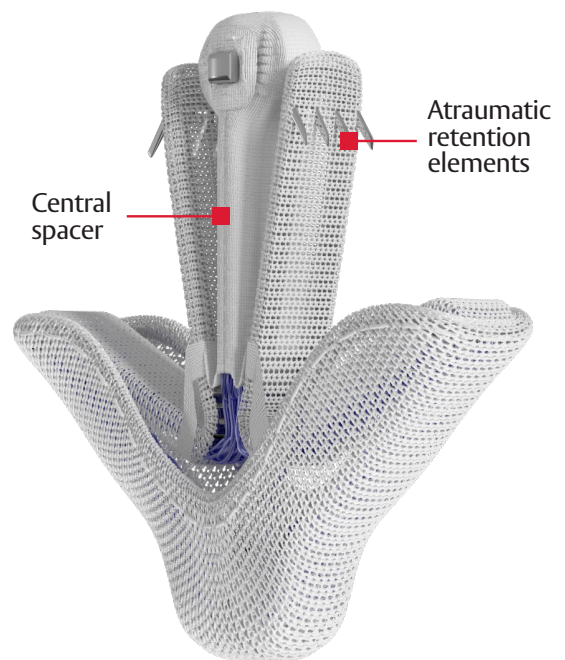
■ A unique **central spacer** fills regurgitant orifice area to reduce regurgitation

■ **Nitinol** spring based closure and acute implant flexing respects native anatomy

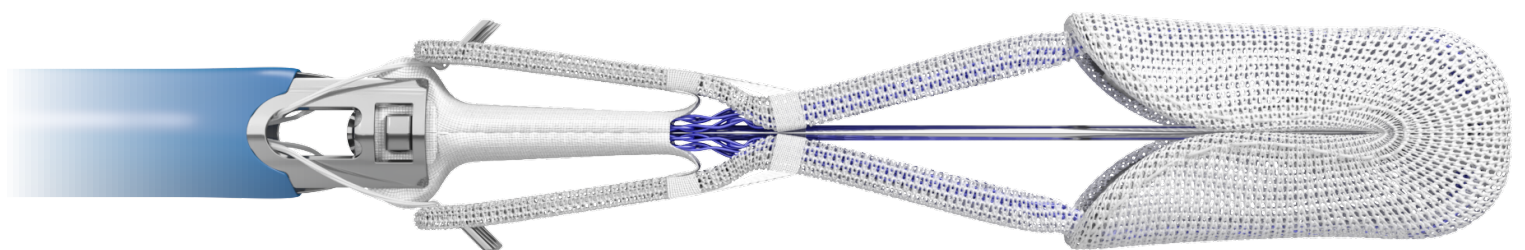
■ A single row of **atraumatic retention elements** allow for multiple capture attempts to optimize implant positioning on leaflets



PASCAL



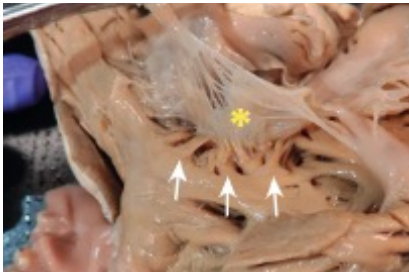
PASCAL Ace



PASCAL and PASCAL Ace feature implant elongation

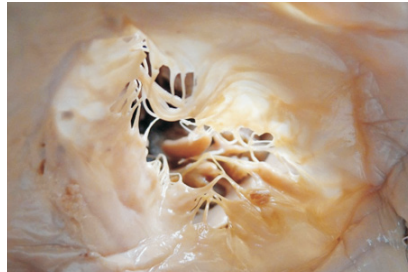
# PASCAL Ace implant system designed for even challenging tricuspid anatomies to treat more patients with **tricuspid** regurgitation

## Dense chordae



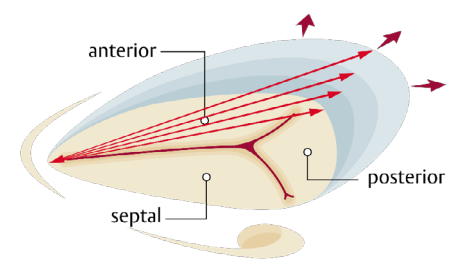
High variability of chordae: quantity, density, and location<sup>1,2</sup>

## Thin and variable leaflets



Thin, translucent, and more delicate leaflets with deep clefts and folds<sup>1,2,3</sup>

## Large annulus



90% of TR is Functional TR (FTR), presenting with annular dilatation<sup>4</sup>

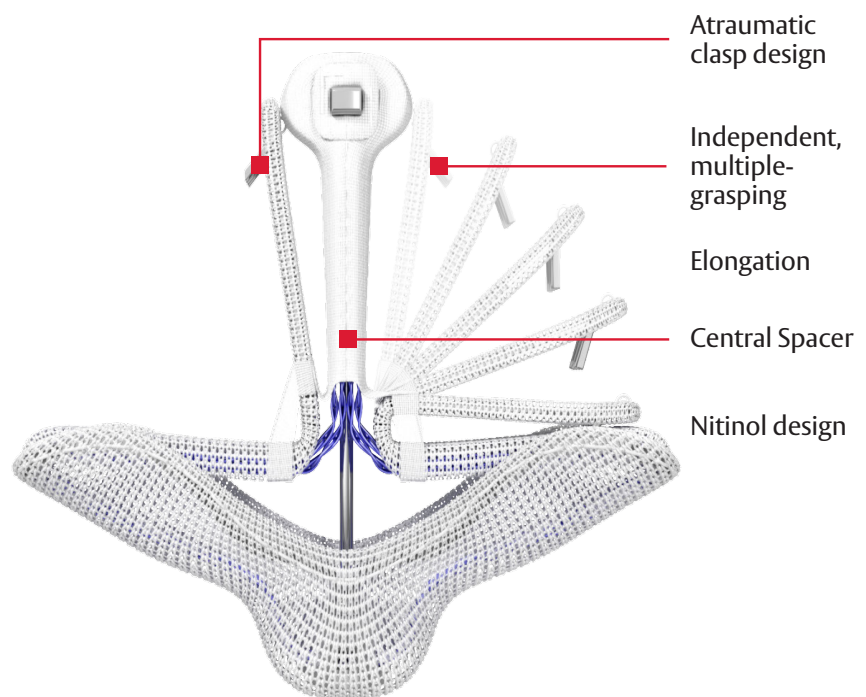
### References:

1. Pozzoli A, et al. *Frontiers in Cardiovascular Medicine*. 2018; 5: 1-9 ; 2. Dahou A, et al. *JACC*, 2019; 12: 458-68 ; 3. Athavale S, et al. *Anat Cell Biol*, 2017;50:1-6;
4. Tomos Mas P, et al. *Heart*. 2015; 101:1840-1848

## **PASCAL Ace implant system**

***A narrower profile designed for precision and ease-of-navigation in complex anatomies***

- **Atraumatic clasp design** reduces stress on fragile tricuspid leaflets
- **Implant elongation** facilitates safe repositioning within dense chordae and subvalvular apparatus
- **Independent, multiple-grasping** supports gentle interaction and capture of leaflets in difficult pathologies



**PASCAL Ace**

# The PASCAL Stabilizer Rail System designed to add stability to enable controlled catheter movements



## Increased stability

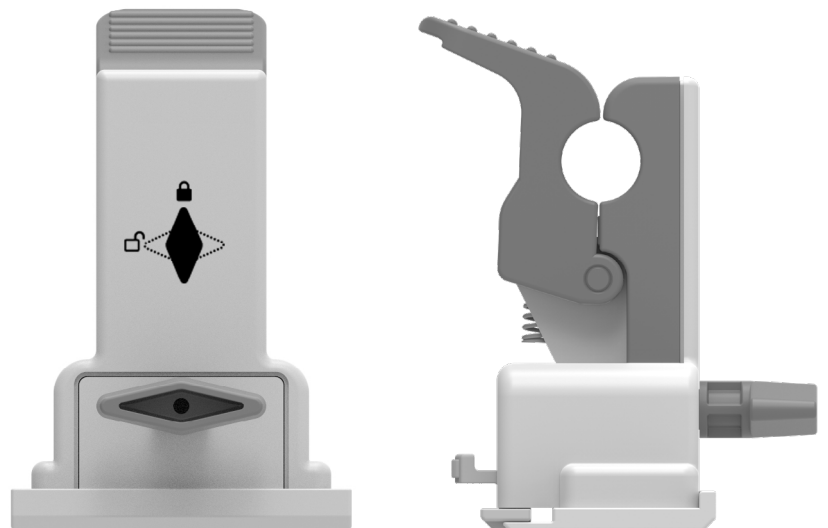
- A rail-based system with multiple stabilizers to advance, retract, and torque catheters

## Intuitive design

- Secure stabilizers allow for stable, incremental movements and fine adjustments

## Simplified process

- Ease-of-use enhancements help reduce unintended catheter movements throughout the procedure





---

Visit [Edwards.com/PASCAL](https://www.edwards.com/PASCAL) to learn more.

---

For professional use. For a listing of indications, contraindications, precautions, warnings, and potential adverse events, please refer to the Instructions for Use (consult [eifu.edwards.com](https://www.eifu.edwards.com) where applicable).

Edwards devices placed on the European market meeting the essential requirements referred to in Article 3 of the Medical Device Directive 93/42/EEC bear the CE marking of conformity.

Edwards, Edwards Lifesciences, the stylized E logo, PASCAL and PASCAL Ace are trademarks or service marks of Edwards Lifesciences Corporation. All other trademarks are the property of their respective owners.

© 2022 Edwards Lifesciences Corporation. All rights reserved. PP--EU-1940 v2.0

Edwards Lifesciences • Route de l'Etraz 70, 1260 Nyon, Switzerland • [edwards.com](https://www.edwards.com)



Edwards